

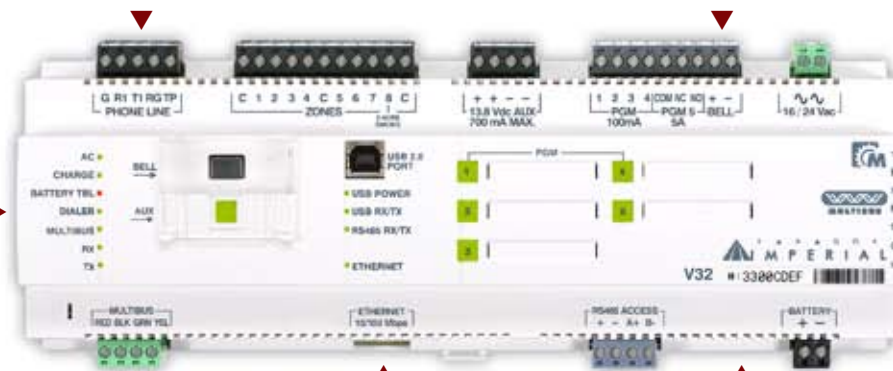
# Join the excitement. Promote your future.



**BabyWare:**  
Multi-user, multi-account management software

**Home Automation:**  
MAMA macro engine, 512 outputs for lighting, motorized shutters, water irrigation, HVAC, and more

**Access Control:**  
64 stand-alone doors and 4000 users



**Multibus:**  
511 bus modules with remote firmware upgradeability

**Ultra-fast IP-Based System:**

**Security:**  
32 partitions, 384 zones  
ultra-fast user action response time

- Ultra-fast user action response time
- Remote full system firmware upgrade via 4-wire Multibus using RS-485 at 57.6Kbps (One-time physical connection philosophy)
- System owner control architecture
- BabyWare: multi-user, multi-site IP site management software for System Owner, User and Site Manager
- 8 simultaneous IP connections to the system
- Software Zone Test Mode: unique time-saving tool
- European style, labour and wiring saving DIN rail construction throughout the system
- 13.8Vdc low voltage bus, "install anywhere" (even in wet areas) user MAMA control modules



Training spaces are limited. Don't miss out on the exciting Imperial introduction by reserving your seat with your local distributor.

# Overview

---

The Imperial system was designed to offer true integration of home automation with energy management features, access control, security, and the latest communication technology, combined with user-friendly programming, easy maintenance, operation, and site supervision. System architecture was designed to be simple, easy to install and troubleshoot, thus reducing labour and costs related to installation, programming and maintenance. All system control modules are fully upgradeable through the communication bus, and are packaged in a standard DIN Rail assembly, resulting in an installation that saves space, provides easy access and replacement, and offers a nice visual presentation of the system. A lot of research and development has gone into the Imperial system to provide a solution that fully adapts to any need, whether for private residential living or commercial management.

## MAMA Home Automation



Imperial home automation is managed by the MAMA automation engine. MAMA offers full on/off control of AC (110/220V) and DC devices, such as lighting, motors, pumps, air conditioning, and heating. MAMA also offers dimming control of lights, including incandescent lights, fluorescent lights and LED lamps (Q4 2009), powerful progressive shutter control (not just open/close), and full sprinkler/irrigation control.



With Imperial's unique system integration, every MAMA controller output can be controlled manually, or driven by a macro, that can be activated by system event, timing, sunset/sunrise, sensor input, or energy management feature. The powerful MAMA automation engine was designed with flexibility and expandability in mind to provide additional features when required to complement changing lifestyles and needs. The Imperial has a maximum capacity of 512 outputs and 384 inputs

## Access Control

Independent from the rest of the system, Imperial access control provides uninterrupted, fail-safe operation, even when another portion of the system is down for service or upgrade. With capacity for 64 doors and 4,000 cards, Imperial provides ultra-fast response time, and easy user maintenance and access features. With Imperial's unique integration, all readers can also arm/disarm the security system as well as control any MAMA output.

## Security

Based on the well-proven EVO security system, Imperial offers integration of home automation and access control while providing true uncompromised security for up to 32 separate partitions or areas using up to 384 zones. Security communication uses the latest technology, such as sending system status via e-mail and SMS, as well as remote user operation via cell phone (GPRS/GSM), internet (IP) and voice-guided phone menus (Q3 2009).

## Communications

The Imperial system includes a variety of communication technologies, including IP, GPRS/GSM (Q2 2009), and voice (Q3 2009). A traditional landline is also included for security reporting. Fast system access is possible using any of these methods to monitor, operate, program, upgrade system modules with minimum down time, and perform uploading/downloading. All system events can be programmed to send an SMS or e-mail, which keeps users or maintenance personnel informed, secured and in control at all times.

## System Hardware

The Imperial integrated system is managed by the V32 main controller, which features an expandable, secured and encrypted communication bus. This bus called Multibus provides reliable communication for home automation and security and independent RS-485 communication for access control expansion. Up to 511 modules can be connected on the multi-speed, low-voltage (13.8Vdc) 4-wire communication bus. Innovative and unique, the firmware of all Imperial modules connected to the bus are remotely upgradeable via fast communication either locally or remotely through the internet. The V32 controller runs on a private operating system, which makes it more reliable and immune to hacker attacks, viruses, and crashes since it does not rely on Windows or computer hardware. Advance encryption technology is offered on the V32 due to its built-in TCP/IP connection with advanced password management that enables the system to send an e-mail and SMS should the system recognize unauthorized attempts to connect.

With its innovative "install-and-forget" approach, installed modules may not need to be accessed by a technician physically; all can be done remotely through the system bus, which keeps downtime to a minimum should a system upgrade be needed. Bus wire range can be extended by 1000m (3,000ft) with the Imperial hub modules. Imperial can conveniently replace traditional wiring systems, or can be installed using 4-wire system bus. All modules include self-diagnostics and status displays to simplify installation, maintenance and troubleshooting.

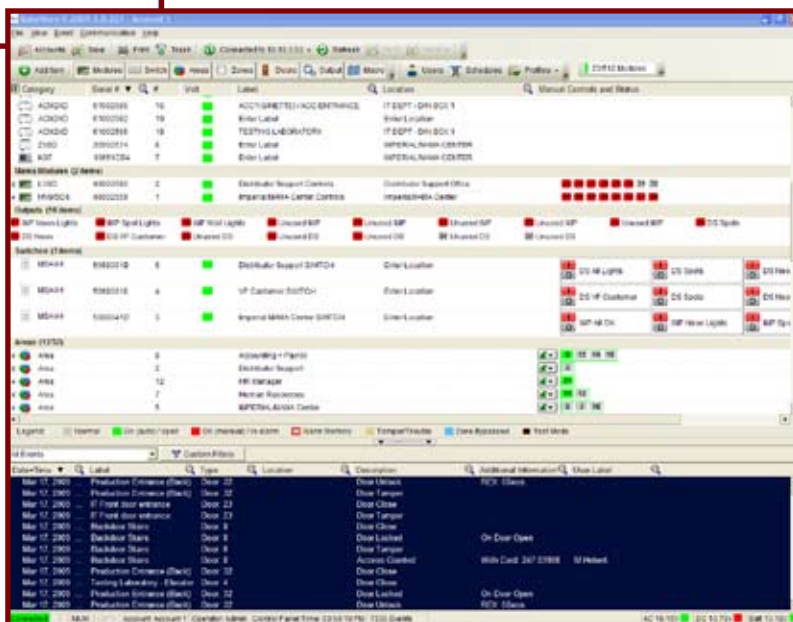
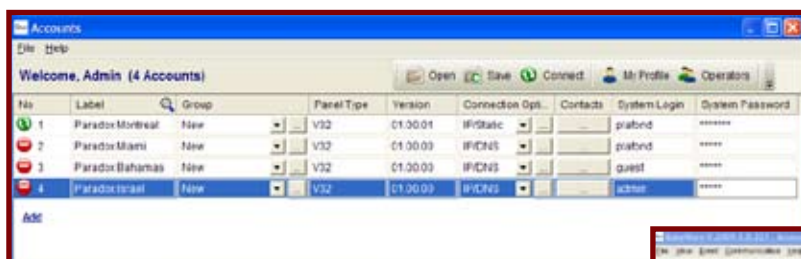
## BabyWare Software

The powerful and user-friendly BabyWare software provides programming, control and monitoring of the site. The V32 main controller is the database server, which makes recovery of data fast without the need of a PC server. Some features include: Multiple user connections (up to 8), multi-account management, customizable access rights for PC users, complete backup utilities, troubleshooting and support tools, system mapping (Q4 2009), and powerful sort, search and print functions.

## Future Expansion

All system modules are designed with extra processing speed and memory capacity for future expansions. Therefore, systems purchased today, can be upgraded and expanded to add new features as they are introduced. This is backed by a 3-year warranty replacement on all Imperial MAMA modules and a 12-year service guarantee that provides peace of mind knowing that replacement modules and service will be available for years to come.

## BabyWare Screenshots



## System Capacity

Home Automation	
MAMA Output Capacity	8 (purchase a license to increase to 32, 64, 128, 192, 256, 384, or 512)
Macros	16 per MAMA output module
Home Automation Event Buffer	10,000
Access Control	
Doors	4 (purchase a license to increase to 16, 32, 48 or 64 doors)
Access Cards	4,000
Access Levels	256
Schedules	256
Access Event Buffer	8,000 buffered in V32 controller (1,000 per access control module)
Security	
Partitions	32
Zones	384
User Codes	256
Security Event Buffer	2,000
Communications	
TCP/IP	Built-in port (10/100Mbps)
GPRS/SMS	Using optional PCS200 communicator module (38.8Kbps) available Q2 2009
Landline Dialer	Patented 2 optocoupler dialer circuit - the most reliable dialer in the industry (US Patents 5751803, RE39406)
USB	Built-in USB 2.0 port
Serial	Built-in port (48.8Kbps)
PC Connections	8 simultaneous local/remote BabyWare PC connections

**CONTROLLER**



**V32**  
Imperial Controller

**BABYWARE**

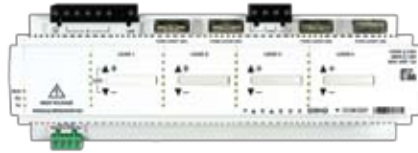


**BabyWare**  
Software

**HOME AUTOMATION**



**DIM1D** (110/220Vac)  
1-Channel Light Dimmer Module



**DIM4D** (110/220Vac)  
4-Channel Light Dimmer Module



**HV8D**  
8 Output 110/220Vac Module



**LV8D**  
8 Output Low-Voltage Module



**USER CONTROLS**

(Custom colours available, please contact us)



**MSA4H / V**  
4 Button Wall Switch



**MCB1H / V**  
1 Dial / 4 Button Combo Wall Switch



**MSA8H / V**  
8 Button Wall Switch



**MVCA2**  
2 Dial Dimmer Wall Switch

**ACCESS CONTROL**

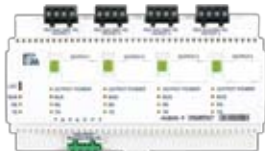


**ACM24D**  
Stand-Alone, 2-Door 4-Reader Access Control Module

**POWER SUPPLY AND HUB**



**PS27D**  
4-Output 2.85A Power Supply Module

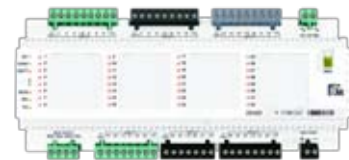


**HUB4D**  
4 Port Hub and Bus Isolator Module



**PS100D**  
Power Supply  
(In: 110/220Vac, Out: 15Vdc/6.5A)

**SYSTEM INPUTS**



**ZX32D**  
32 Zone/Input Expansion Module



**ZX16D**  
16 Zone/Input Expansion Module



**ZX8D**  
8 Zone/Input Expansion Module



**DB608D**  
DIN Metal Box  
With Door

**KEYPADS**



**K656**  
LCD Keypad



**K07C**  
Grafica Color LCD Keypad